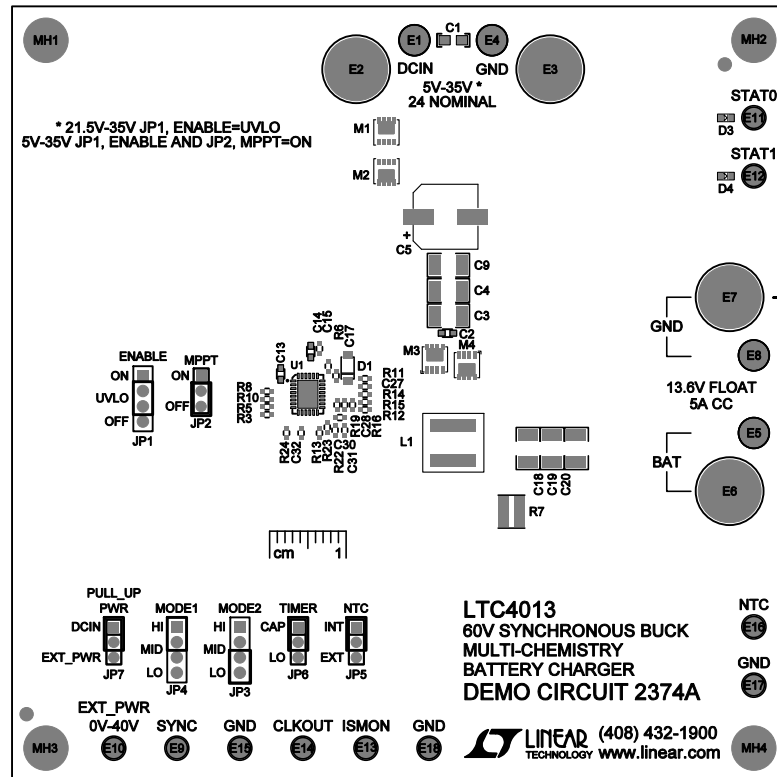


REVISION HISTORY				
ECO	REV	DESCRIPTION	APPR	DATE
-	3	PRODUCTION	MM	06-06-16

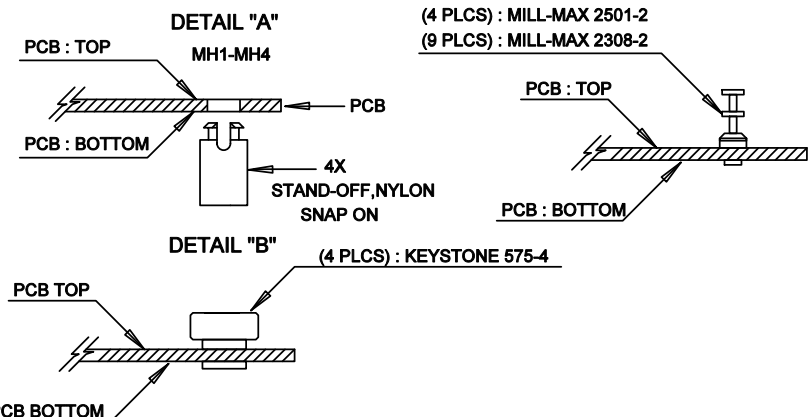
NOTES: UNLESS OTHERWISE SPECIFIED

1. WORKMANSHIP SHALL BE IN ACCORDANCE WITH IPC-A-610.
2. ASSEMBLY PROCESS SHALL INCLUDE: REFLOW SOLDER TOP SIDE SMD.
MAXIMUM SOLDER TEMPERATURE IS 240 DEGREES CELCIUS.
3. PARTS TO OMIT WILL BE SPECIFIED ON THE BILL OF MATERIALS
LOCATIONS OF OMITTED PARTS SHALL BE FREE OF SOLDER.
MASK THE SOLDER STENCIL WHERE SMT PARTS ARE OMITTED.
4. INSTALL SHUNTS AS SHOWN ON ASSY DRAWING.
5. DEPANELIZE BOARDS AFTER ASSEMBLY AND ROUTE-OUT THE BREAKOUT TABS ON FOUR SIDES OF THE BOARD EDGE.
6. APPLY ASSEMBLY STAMP OR QA STAMP TO BOTTOM OF BOARD (UNSHOWY AREA).
7. INSTALL TURRETS AND 4 STAND-OFFS AT FOUR CORNERS AS SHOWN BELOW:

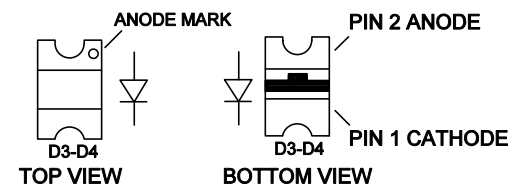


DETAIL "A"

DETAIL "B"



8. INSTALL LED's D3 AND D4 AS SHOWN:



APPROVALS		LINEAR TECHNOLOGY		
PCB DES. NC	APP ENG. MM	TITLE: TOP ASSEMBLY DRAWING: 60V SYNCHRONOUS BUCK MULTI-CHEMISTRY BATTERY CHARGER		
		SIZE N/A	IC NO. LTC4013EUF DEMO CIRCUIT 2374A	REV. 3
SCALE = NONE		SHT 1 of 2		

1630 MCCARTHY BLVD
MILPITAS, CA 95035
PH: (408)432-1900
www.Linear.com
LTC CONFIDENTIAL-
FOR CUSTOMER USE ONLY